

和撒那



微信扫描二维码关注佳音吉他小课堂公众号
底部对话框回复关键字和撒那
观看演示视频

词曲: Brooke Fraser

编配: 佳音吉他小课堂

1=E 4/4 Temp=74

Chord diagrams for the first system:

- C#m:
- E:
- F#m:
- G#m:

吉他和弦图

5

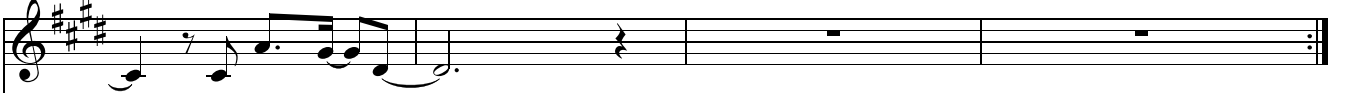
我看见 荣 耀 君 王, 驾 着 云 彩 而 降 临, 全 地 震 动,
主 你 用 慈 爱 怜 悯, 将 我 罪 完 全 洗 净, 万 民 歌 唱,

Chord diagrams for the second system:

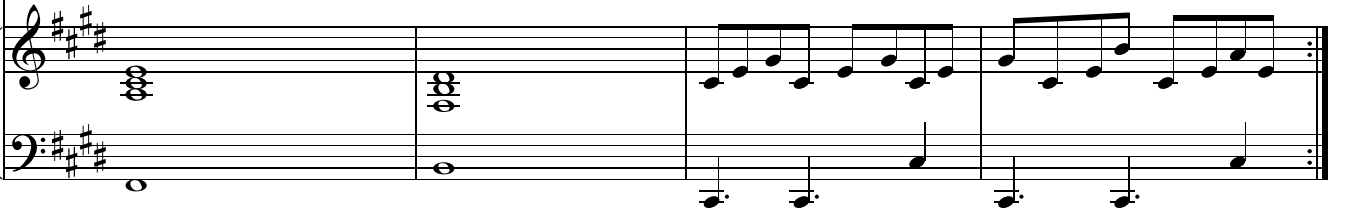
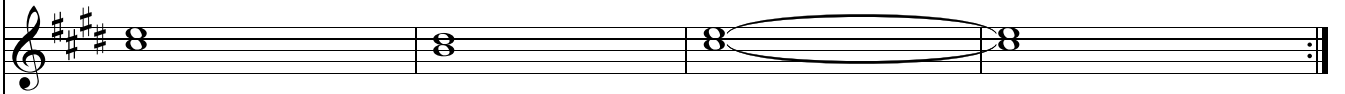
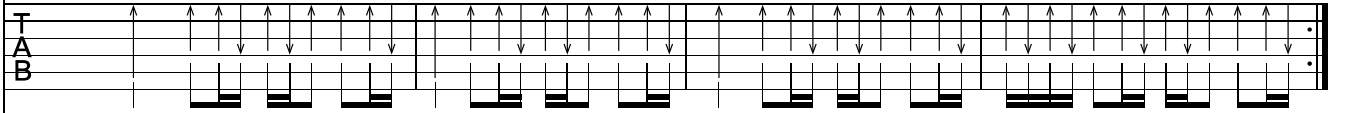
- E:
- C#m:

9

1.



全地震动
万民歌唱

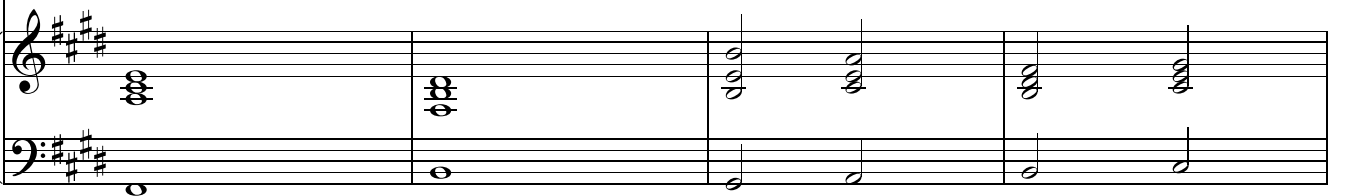
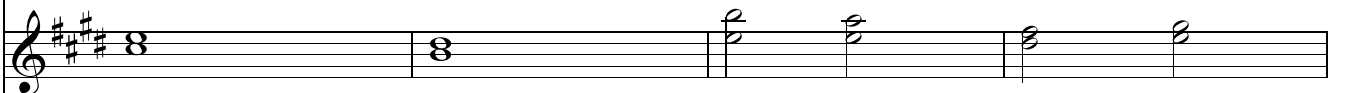
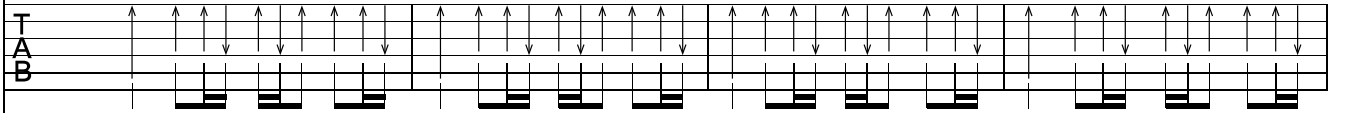


13

2.



万民歌唱 和撒那, 和撒那, 和



17

撒那归至高神, 和撒那, 和撒那, 和

A(add2) C#m 4fr B E A(add2) B C#m 4fr

TAB

21

撒那归至高神。 我看见全新时代
我看见复兴来

A(add2) B C#m 4fr E

TAB

25

1.

代临, 兴起要得着这地, 放下自己, 放下自己。
全因祷告寻求你, 我们屈膝,

C#m $\times^{\infty} 4fr$ F#m $\times^{\infty} 4fr$

TAB

29

2.

我们屈膝. 和撒那, 和撒

B $\times^{\infty} 4fr$ F#m $\times^{\infty} 4fr$ B $\times^{\infty} 4fr$ E $\times^{\infty} 4fr$ A(add2) $\times^{\infty} 4fr$

TAB

33

那, 和 撒那归至高神, 和 撒 那, 和 撒

B C#m A(add2) C#m B E A(add2)

T
A
B

37

那, 和 撒那归至高神.

B C#m A(add2) B C#m E

T
A
B

41

41

F#m G#m C#m E

T
A
B

45

45

求医治洗净我心,
我要能触摸你心,

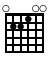
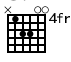
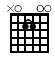
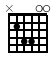
F#m G#m A(add2) B

T
A
B

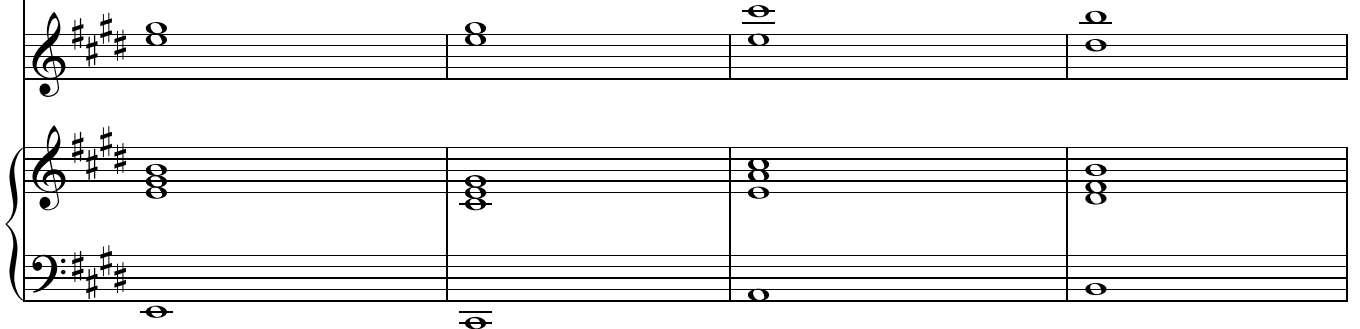
49

1.

开启我双眼 看见你心意, 教我如何能爱你的百姓。
我所做一切 全为你旨意, 一生追求你直到

E  C#m  A(add2)  B 


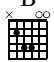
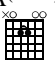
T
A
B




53

2.

天地 废去。

C#m  B  A(add2) 

T
A
B



57

和撒那, 和撒

E A(add2)

61

那, 和撒那归至高神, 和撒那, 和撒

B C#m A(add2) C#m B E A(add2)

65

那, 和 撒 那 归 至 高 神.

B C#m A(add2) B E

T A B

The piano accompaniment consists of two staves: a right-hand treble clef staff and a left-hand bass clef staff. The right-hand part features chords in the key of D major (F#, C#, G, D) with a melodic line. The left-hand part provides a harmonic foundation with chords and a bass line. The piece concludes with a double bar line.